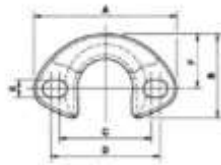


C' CLAMP (ALL INCLUDE SCREW PACK)



SIZE	PART No.	DIMENSIONS (mm)					
		A	B	C	D	E	F
KF 10 Nickel Plated	C11002340	59	35	38	45	6.3	22
KF 25 Nickel Plated	C11004340	70	44	54*	54	8.3	25.4
KF 40 316L Stainless	C11005340	100	73.5	79	81	8.3	50