

# PJG Short Bellows Vacuum Cups



## Features

- Short Bellows for Fast Response
- More Lip Seal Contact for Corrugated, Textured Surfaces
- Soft Sealing Lip
- 6 mm to 80 mm

## Applications

The short stroke bellow suction cup has an extra thin sealing edge and shorter stroke versus the traditional bellows for faster response. The cups are good for corrugated and smooth surfaces.

## PJG Series Vacuum Cups

Versatile bellow cup design provides increased sealing lip and level compensation for products with irregular, smooth, curved surfaces, or flexible sheets.

## PJTM Series Male Thread Connector

Simple male connection for low profile positions secured to a plate or bracket.

Fitting Material: Aluminium.



## PJTF Series Female Thread Connector

Simple female connection for low profile positions secured to a plate or bracket.

Fitting Material: Aluminium.



## PJTK Series Barbed Bulkhead

Top stem connectors secured with jam nuts and allow tubing connections at the top side. Nickel plated brass materials.



## PJYK Series 90° Barbed Adapter

Side stem connectors allow you to secure the stem with a bolt through a plate or "L" bracket to allow the tube connection from the side port. Nickel plated brass materials.



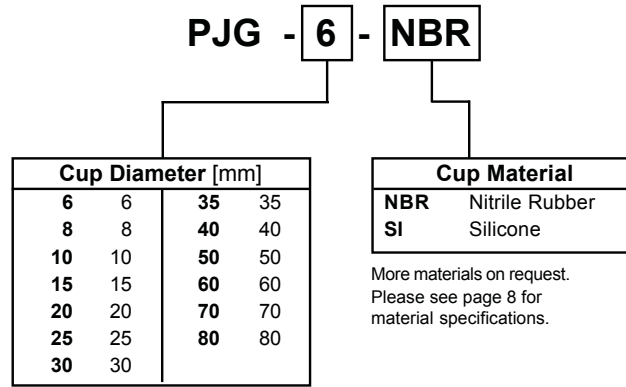
## PJTYS Series Bulkhead Level Compensator

303 stainless steel construction secured with jam nuts. Spring biased compensators can absorb impacts of down-strokes and adjust for different levels of pick up points. 303 stainless corrosion resistant materials with drymet bushings increases the strength and life.



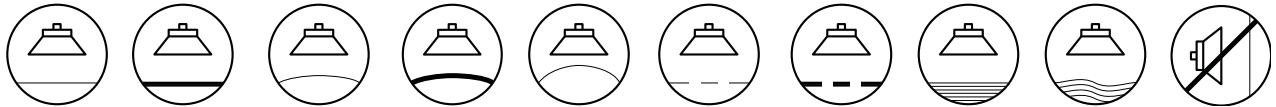


**Model Number Index**

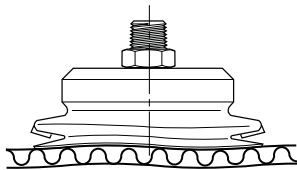


**Application Guide**

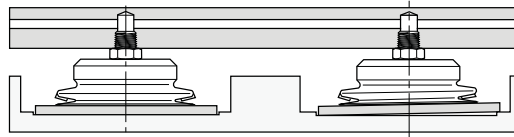
**Short Bellows**



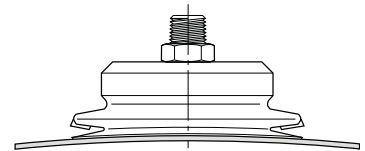
- High Speed Packaging



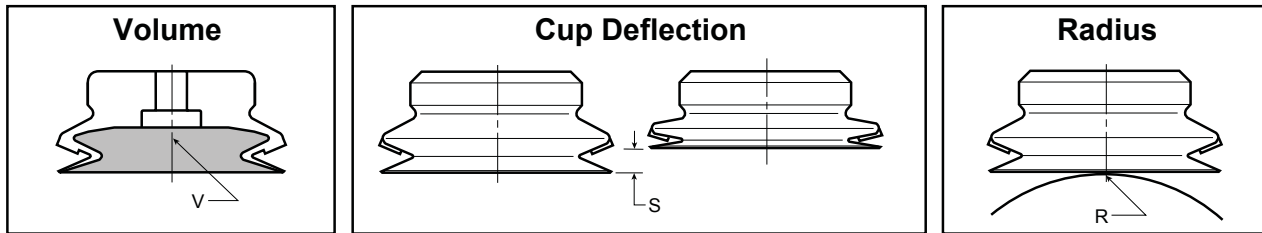
- Level Compensation for Small Electronic Components



- Flexible Product
- Soft Seal Lip



**Main Data for Short Bellows PJG Cups**



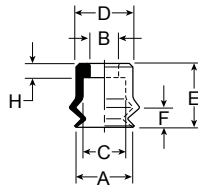
Model Number	Cup Diameter [mm]	Area [cm <sup>2</sup> ]	Volume [V] Liters	Lifting Force @ 60% [N]		Cup Deflection (S) [mm]	Radius R [mm]
PJG-6-*	6	0,28	0,000016	1,70	—	4,2	4,0
PJG-8-*	8	0,50	0,00007	3,10	—	4,0	5,0
PJG-10-*	10	0,79	0,00017	4,80	—	3,0	6,0
PJG-15-*	15	1,77	0,0005	10,8	—	3,3	10,0
PJG-20-*	20	3,14	0,0012	19,2	—	5,5	13,0
PJG-25-*	25	4,91	0,0025	30,0	—	6,5	17,5
PJG-30-*	30	7,07	0,003	43,2	—	7,0	26,0
PJG-35-*	35	9,62	0,004	58,9	—	7,0	31,0
PJG-40-*	40	12,6	0,005	76,9	—	7,2	37,0
PJG-50-*	50	19,6	0,008	120	—	9,0	41,0
PJG-60-*	60	28,3	0,020	173	—	8,0	70,0
PJG-70-*	70	38,5	0,030	235	—	9,5	90,0
PJG-80-*	80	50,3	0,040	308	—	9,5	100,0

\*Cup Material

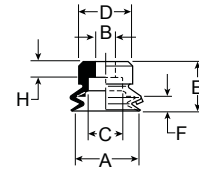


## Dimensions

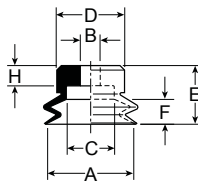
PJG-6 thru  
PJG-8



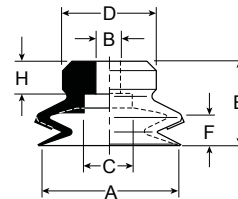
PJG-10 and  
PJG-15



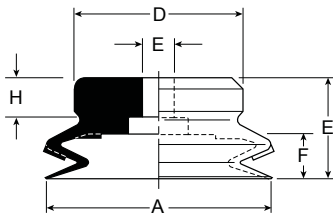
PJG-20



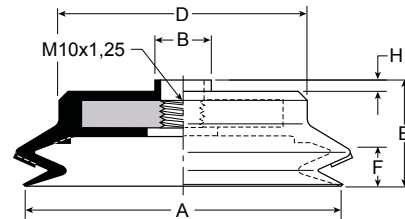
PJG-30 thru  
PJG-40



PJG-50



PJG-60 thru  
PJG-80



Model Number	ØA	ØB	ØC	ØD	E	F	H
PJG-6-*	6	4	6	7,5	9	4,2	2
PJG-8-*	8	4	6	8	9	4	2
PJG-10-*	10	4,6	7,8	11	9,5	3	3,5
PJG-15-*	15	4,6	7,8	12	11	3,3	3,5
PJG-20-*	20	4,6	10,8	15	13	5,5	4,5
PJG-25-*	25	4,6	10,8	17,5	15,5	6,5	4,5
PJG-30-*	30	5,8	10,8	20	18	7	7
PJG-35-*	35	5,8	10,8	25	18	7	7
PJG-40-*	40	5,8	10,8	30	18	7,2	7
PJG-50-*	50	7,8	19,8	40	20	9	7
PJG-60-*	60	12,5	—	45	22,5	8	2,5
PJG-70-*	70	12,5	—	55	23,5	9,5	2,5
PJG-80-*	80	12,5	—	68	23,5	9,5	2,5

Millimeter

\* Cup Material