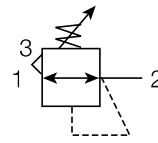


14R Regulators

Symbol



- Unbalanced poppet standard.
- Solid control piston with lip seal for extended life.
- Non-rising adjusting knob.
- Compact, 73,2mm high by 42mm wide.
- High Flow: 1/8" – 6 l/s[§]
1/4" – 7 l/s[§]

Options:

1	4	R	1	13	F	C	1	
Port size			Pressure range		Relief		Port type	
1/8" pipe		0	Without gauge -		Relieving	F	NPT	Blank
1/8" gauge port			Yellow knob		Non-relieving	G	BSPP	1
1/4" pipe		1	2 bar	10				
1/8" gauge port			4 bar	11				
			8 bar	13				

Note: Bold options are standard

Port size	Description	Order code	Max bar	Height mm	Width mm	Depth mm
G1/8	8 bar - BSPP - without gauge	14R013FC1	20.7	73	42	40
G1/4	8 bar - BSPP - without gauge	14R113FC1	20.7	73	42	40

Note: 31mm dia. hole required for panel mounting.

§ L/s = 6.9 bar inlet, 6.2 bar no flow secondary setting and 0.7 bar pressure drop.

Specifications

Gauge ports	G1/8	
Port size	G1/8 / G1/4	
Operating temperature	0°C to 52°C	
Max supply pressure	0 to 20.7 bar	
Secondary pressure range	Standard pressure	0 to 8 bar
	Medium pressure	0 to 4 bar
	Medium pressure	0 to 2 bar
Weight	140 gm	

Materials of Construction

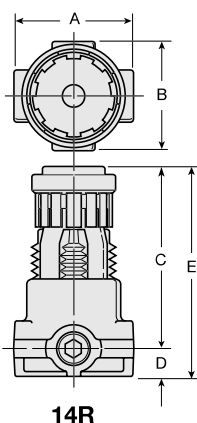
Adjusting nut	Brass
Adjusting stem & spring	Steel
Body	Zinc
Bonnet, Seat, Piston & Valve poppet	Plastic
Seals	Nitrile

Caution:

Regulator pressure adjustment – The working range of knob adjustment is designed to permit outlet pressures within their full range. Pressure adjustment beyond this range is also possible because the knob is not a limiting device. This is a common characteristic of most industrial regulators, and limiting devices may be obtained only by special design.

For best performance, regulated pressure should always be set by increasing the pressure up to the desired setting.

Dimensions



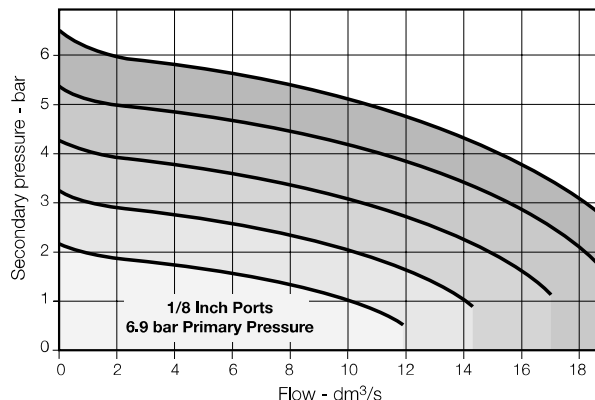
14R

14R Regulator Dimensions

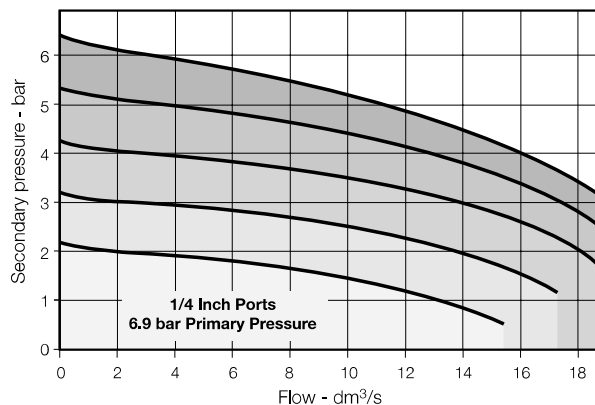
	A	B	C	D	E
14R	42	40	63,5	10	73
14R**L*	1.65	1.56	2.28	0.38	2.68
14RM	A	B	C	D	E
	1.50	1.50	2.36	0.50	2.98
	F	G	H	J	
	1.188	0.594	0.325	0.725	

Flow Charts

**Relief and Flow Characteristics
 14R013F***



**Relief and Flow Characteristics
 14R113F***



Accessories

Bonnet assembly kit		L01369
Gauges	0 to 2 bar	P3D-KAB1AYN
	0 to 4 bar	P3D-KAB1ALN
	0 to 10 bar	P3D-KAB1ANN
Mounting bracket kit (Includes panel mount nut)		PS417BP
Panel mounts nuts	Plastic	P78652
	Metal	P01531
Service kits	Non-relieving	PS422P
	Relieving	PS423P

Warning

**Product rupture can cause serious injury.
 Do not connect regulator to bottled gas.
 Do not exceed maximum primary pressure rating.**