

SRS Valve

10 mm Manifold Mount Solenoid Valves



The 10mm SRS Series Plastic Solenoid Valve converts a digital electrical signal into a digital pneumatic output. The SRS Valve is constructed of engineering thermoplastics and non-corrosive metals to exceed the specifications demanded by critical applications in the life sciences.

Features

- ◆ Design incorporates thermoplastics and non-corrosive metals.
- ◆ Offers high-density manifold mounting with convenient manifold to PC board interface.
- ◆ Weighs only 0.23 ounces; perfect where low weight is critical to overall system.

Physical Properties

Valve Type:
3-Way, 2 Position
(NO, NC, & Distributor)

Media:
Gases and select liquids

Operating Environment:
0 to 55°C

Storage Temperature:
-40 to 70°C

Length:
1.5 in (38.1 mm)

Width:
0.394 in (10 mm)

Height:
0.61 in (15.49 mm)

Porting:
Manifold mount; Gasket and screws supplied

Weight:
.23 oz (6.57 grams)

Internal Volume:
0.0267 cm³

Filtration:
40 micron (recommended)

Lubrication:
None required

Electrical

Power:
0.5, 1.0, or 2.0 Watts

Voltage:
5, 12, 24 VDC + 10%

Wetted Materials

Crystalline Plastics:
PBT; LNP Thermocomp®

Elastomers:
FKM

Non-Corrosive Metals:
302 Series Stainless Steel; 430 FR Series Stainless Steel; CMI-B Core Iron; Electroless Nickel Plating

Performance Characteristics

Leak Rate:
≤0.016 sccm (bubble tight)

Response:
<30 msec cycling (2 Watts)

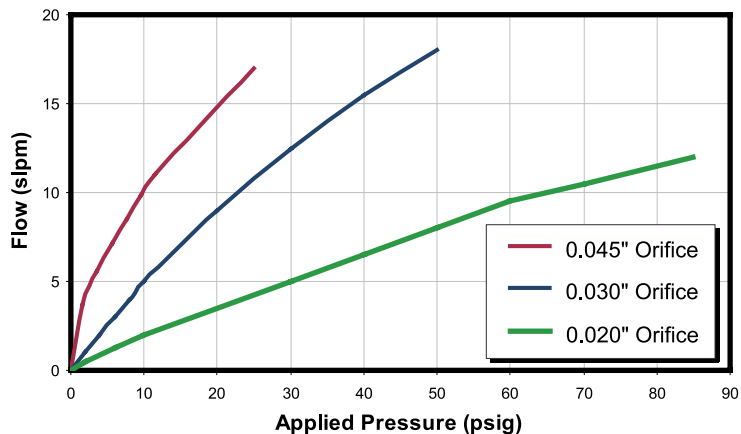
Pressure:
0 to 85 psig (0.020" orifice)
0 to 50 psig (0.030" orifice)
0 to 20 psig (0.045" orifice)

Vacuum:
0-27 in Hg

Orifice Sizes/Equivalent Cv:
0.020"/0.0075 Cv
0.030"/0.017 Cv
0.045"/0.027 Cv

Flow

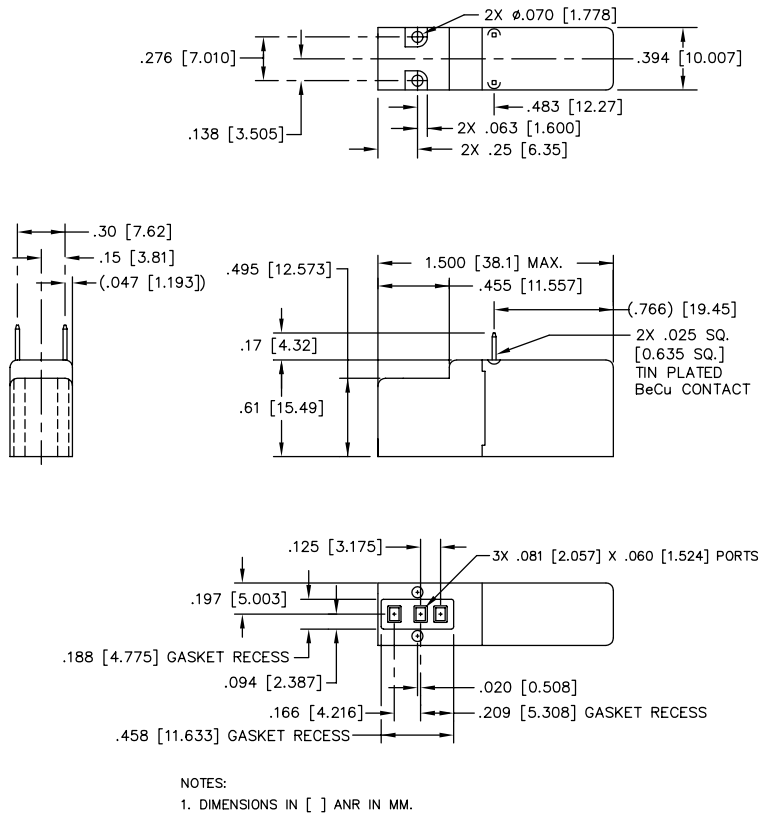
SRS Typical Air Flow



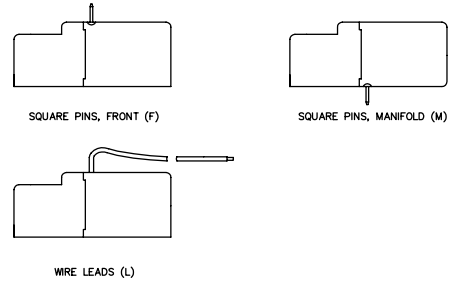
Thermocomp® is a registered trademark of General Electric Company.



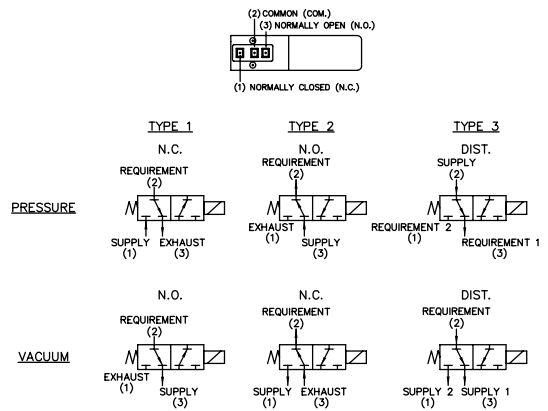
Dimensions



ELECTRICAL INTERFACE OPTIONS



TYPICAL VALVE SELECTION CONSIDERATIONS:



Ordering Information

Sample Part ID	SRS	10	2	P	V	12	M
Description	Series	Model Number	Type	Material	Seal Material	Voltage	Electrical Connection
Options		No: Pressure/Orifice/Coil Wattage 10: 0-35 psi/0.020"/0.5 Watt 11: 0-85 psi/0.020"/1 Watt 13: 0-20 psi/0.030"/0.5 Watt 14: 0-50 psi/0.030"/1 Watt 16: 0-10 psi/0.045"/0.5 Watt 17: 0-20 psi/0.045"/1 Watt	1: 3-Way NC 2: 3-Way NO 3: Distributor	P: Engineering Plastic	V: FKM	5: 5 VDC 12: 12 VDC 24: 24 VDC	F: 0.025" Square Pins, Front M: 0.025" Square Pins, Manifold Interface L: Insulated Wire Leads, 18", Front

NOTE: Not all versions available for on-line purchase. Please consult Parker Life Sciences for other considerations. For more detailed information, visit us on the Web, or call and refer to Performance Spec. #790-002090-001 and Drawing #890-003061-001.

Order on-line at www.parkerfluidics.com

