

**22mm solenoid operator part numbers and spares**

**Solenoid coils for 22mm solenoid operators**

Voltage	Weight (Kg)	Order code Form B
12V 60Hz	0.093	<b>P2FCB340</b>
24V 50/60Hz	0.093	<b>P2FCB342</b>
12V DC	0.093	<b>P2FCB345</b>
24V DC	0.093	<b>P2FCB349</b>
48V DC	0.093	<b>P2FCB351</b>
110V/50Hz, 120V/60Hz	0.093	<b>P2FCB353</b>
230V/50Hz, 230V/60Hz	0.093	<b>P2FCB357</b>

**Spare Solenoid Nuts**



**Valves requiring captured exhaust should be fitted with plastic knurled nut**

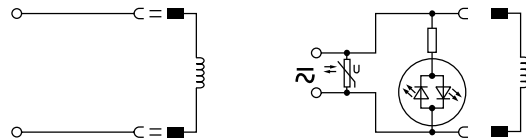
Order code
<b>P2FNP</b>

**Valves with vented exhaust are fitted with diffuser plastic nut**

Order Code
<b>P2FND</b>

**Solenoid Connectors / Cable Plugs EN175301-803**

	Description	Order code
	22mm Industrial Form B	
With standard screw	Standard IP65 without flying lead	<b>3EV10V10</b>
	With LED and protection 24V AC/DC	<b>3EV10V20-24</b>
	With LED and protection 110V AC	<b>3EV10V20-110</b>
	With LED and protection 230V AC	<b>3EV10V20-230</b>
With cable	24V AC/DC, 5m cable LED and protection IP65	<b>3EV10V20-24L5</b>
	110V AC/DC, 5m cable LED and protection IP65	<b>3EV10V20-110L5</b>
	230V AC, 5m cable LED and protection IP65	<b>3EV10V20-230L5</b>



<b>3EV10V10</b>	<b>3EV10V20-24</b>	<b>3EV10V20-24L5</b>
	<b>3EV10V20-110</b>	<b>3EV10V20-110L5</b>
	<b>3EV10V20-230</b>	<b>3EV10V20-230L5</b>

**Cable Plug Dimensions (mm)**

