

Needle Valves

Parker Legris compact needle valves can be installed in any system and are designed for applications requiring accurate **leak-free fluid control** and **excellent service life**.

Product Advantages

- Robust and Easy-to-Use**
 - Accurate flow control
 - Forged brass for improved long-term mechanical strength
 - Robust stem for good operational reliability
 - Corrosion resistance
- Wide Range**
 - Two materials (nickel-plated brass and stainless steel) suitable for many applications
 - Numerous valve and safety accessory configurations



Pneumatics
Water Circuits
Machine Tools
Rubber Industry
Packaging
Textile

Applications

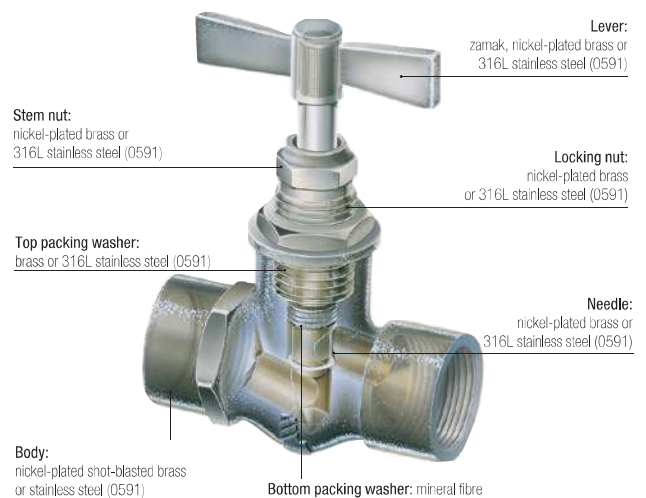
Technical Characteristics

	Brass	Stainless Steel
Compatible Fluids	Compressed air, water, industrial fluids, etc. Other fluids: contact us	Many fluids
Working Pressure	0 to 120 bar	0 to 400 bar
Working Temperature	-20°C to +100°C (except model 0510)	-20°C to +180°C

Tightening Torques	Threads	G1/8	G1/4	G3/8	G1/2
	daN.m	0,10 to 0,20	0,10 to 0,20	0,15 to 0,25	0,20 to 0,35

Reliable performance is dependent upon the type of fluid conveyed.

Component Materials



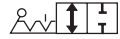
Silicone-free


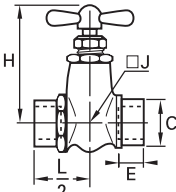

Regulations

- DI: 97/23/EC (module PED A - diameters greater than 25 mm)
- DI: 2006/42/EC (Machinery Directive)
- DI: 2002/95/EC (RoHS)
- RG: 1907/2006 (REACH)

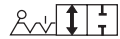
Brass Needle Valves


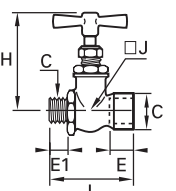

0502 In-Line Needle Valve, Female BSPP Thread



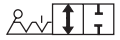
	Nickel-plated brass 	C	DN		E	H	H_{max}	J	L/2	kg					
		G1/8	4	0502 04 10	9	56	50	17	23	0,133					
		G1/4	4	0502 04 13	11	56	50	17	23	0,118					
		G3/8	6	0502 06 17	12	67	60	-	26	0,171					
										9	82	70	-	33	0,426


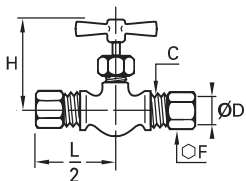

0501 In-Line Needle Valve, Male/Female BSPP Thread



	Nickel-plated brass 	C	DN		E	E1	H	H_{max}	J	L	kg
		G1/8	4	0501 04 10	9	7	56	50	17	44	0,118
		G1/4	4	0501 04 13	11	9,5	56	50	17	46	0,115
		G3/8	6	0501 06 17	12	9,5	67	60	-	48	0,158

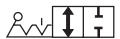
0510 In-Line Needle Valve with Compression Connections


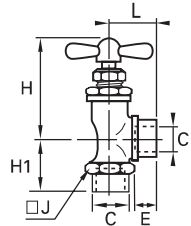



	Nickel-plated brass 	ØD	C	DN		F	H_{min}	H_{max}	L/2	kg
		6	M10x1	4	0510 04 06	13	42	46	29	0,083
		8	M12x1	8	0510 05 08	14	42	46	30	0,083
		10	M16x1,5	5	0510 05 10	19	42	46	31	0,111

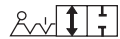
The needle is sealed by an O-ring.
 Maximum operating pressure: Ø4: 100 bar, Ø5: 60 bar
 Working temperature: -15°C to +70°C
 Tightening torques: please refer to the Compression Fittings chapter of this catalogue.


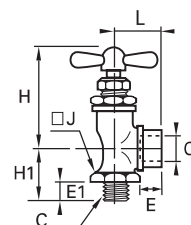

0532 Right-Angle Needle Valve, Female BSPP Thread



	Nickel-plated brass 	C	DN		E	H_{min}	H_{max}	H1	J	L	kg
		G1/8	4	0532 04 10	9	46	52	19	17	19	0,093
		G1/4	4	0532 04 13	11	46	52	21	17	21	0,087
			6	0532 06 13	11	55	63	26	22	26	0,169


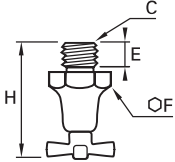


0531 Right-Angle Needle Valve, Male/Female BSPP Thread




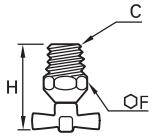


	Nickel-plated brass 	C	DN		E	E1	H_{min}	H_{max}	H1	J	L	kg
		G1/8	4	0531 04 10	7	9	46	52	19	17	19	0,082
		G1/4	4	0531 04 13	9,5	11	46	52	21	17	21	0,090
		G3/8	6	0531 06 17	9,5	12	55	63	25	22	27	0,153
		G1/2	10	0531 10 21	13	16	62	72	34	26	33	0,330

Brass Needle Valves


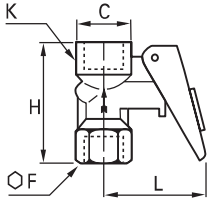

0562 Needle Drain Valve, Male BSPP and Metric Thread

	Brass 	C			E	F	H	H	kg
		M10x1	5	0562 05 60	8	16	37,5	40	0,031
		G1/8	5	0562 05 10	8	16	36	40	0,032
		G1/4	5	0562 05 13	10	19	38,5	42,5	0,040

0563 Needle Drain Valve, Male NPT Thread


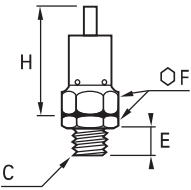

	Brass 	C			F	H	H	kg
		NPT1/4	5	0563 05 14	14	28,5	32,5	0,021

0627 Automatic Vent Pressure Gauge Valve, Female BSPP Thread

	Nickel-plated brass, NBR 	C		F	H	K	L	kg
		G1/4	0627 00 13	19	43,5	20	40	0,097

Pressure: 10 bar
 This isolating valve is used to connect a pressure gauge to a circuit.
 Resetting the lever isolates and vents the gauge.
 A locking pin can be used to enable the gauge to be fitted permanently.

0630 Pressure Relief Valve, Male BSPP Thread

	Brass 	C		E	F	H	kg
		G1/4	0630 06 13	9	17	42,5	0,050

This valve is delivered without calibration, but can be adjusted by inserting metal washers into the hexagon (F).

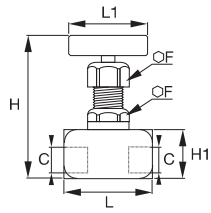
Stainless Steel Needle Valves

0591

Needle Valve, Female BSPP Thread



Stainless steel 316L, PTFE



C	DN		F	H min	H max	H1	L	L1	kg
G1/8	3	0591 03 10	22	90	99	25	45	48	0.345
G1/4	4	0591 04 13	22	90	99	25	50	48	0.356
G3/8	5	0591 05 17	22	90	104	30	56	48	0.430
G1/2	6	0591 06 21	22	90	104	30	62	48	0.483