

# Quick disconnect couplings, fittings and connectors

Q20 Series

Q40 Series

Q60 Series



Shenzhen Foreach Technology Co., Ltd.

Address: 1401-1, 1st Building, Baiwang R&D Building, 5158th ShaHe West Road, Nanshan District, Shenzhen, 518055

China

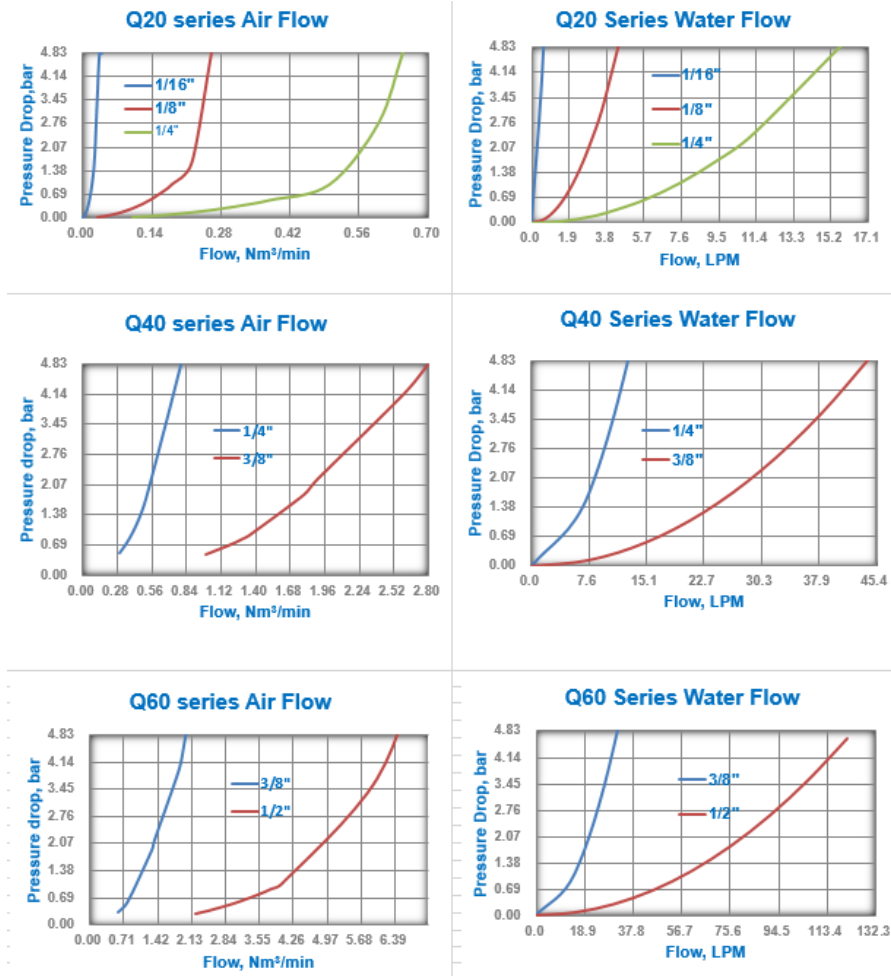
Tel: +86-755-8655-3831

www.foreachtek.com E-mail: info@foreachtek.com

# Summary

The Q-Series push-in couplings enable a thumb lock release for one-handed connect/disconnect operation, and an audible click when coupling ensures connection reliability. The Q series are divided into Q20 series with 1/8" diameter, Q40 series with 1/4" diameter and Q60 series with 3/8" diameter according to the flow rate. They are fully compatible with the same specification series products on the market.

CV (Flow coefficient) of each product series

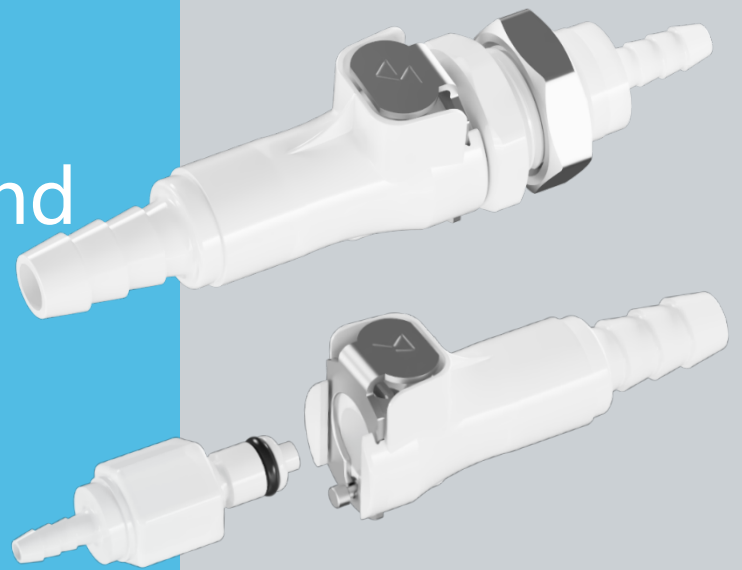


| Q20       | Q2002-PNX | Q2002-PNV | Q2003-PMX | Q2003-PMV | Q2004-PNX | Q2004-PMV |
|-----------|-----------|-----------|-----------|-----------|-----------|-----------|
| Q2002-SMX | 0.19      | 0.14      | 0.20      | 0.14      | 0.27      | 0.15      |
| Q2002-SMV | 0.17      | 0.14      | 0.18      | 0.14      | 0.19      | 0.15      |
| Q2003-SNX | 0.20      | 0.17      | 0.21      | 0.17      | 0.30      | 0.20      |
| Q2003-SNV | 0.19      | 0.15      | 0.19      | 0.16      | 0.21      | 0.17      |
| Q2004-SMX | 0.24      | 0.18      | 0.26      | 0.19      | 0.44      | 0.23      |
| Q2004-SMV | 0.22      | 0.16      | 0.22      | 0.16      | 0.26      | 0.21      |

| Q40       | Q4004-PNX | Q4004-PNV | Q4005-PNX | Q4005-PMV | Q4006-PNX |
|-----------|-----------|-----------|-----------|-----------|-----------|
| Q4004-SMX | 0.95      | 0.51      | 0.96      | 0.60      | 1.00      |
| Q4004-SMV | 0.57      | 0.41      | 0.62      | 0.42      | 0.78      |
| Q4005-SMX | 0.95      | 0.52      | 1.08      | 0.65      | 1.18      |
| Q4005-SMV | 0.60      | 0.41      | 0.70      | 0.44      | 0.81      |

# Q20 Series

Quick disconnect  
couplings, fittings and  
connectors



Mate with CPC-PMC series, LINK-20  
series couplings

Shenzhen Foreach Technology Co., Ltd.

Address: 1401-1, 1st Building, Baiwang R&D Building, 5158th ShaHe West Road, Nanshan District, Shenzhen, 518055  
China

Tel: +86-755-8655-3831

www.foreachtek.com E-mail: info@foreachtek.com

# 1<sup>st</sup> Q20 series quick disconnect couplings

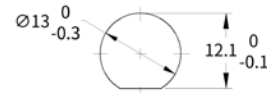
## 1.1 Data sheet

|            |                            |                             |                |
|------------|----------------------------|-----------------------------|----------------|
| Series     |                            | Q20-POM                     | Q20-PP         |
| CPC        |                            | PMC Series                  | PMC12 Series   |
| LINK       |                            | 20AC Series                 | 20PP Series    |
| Spec sheet | Pressure                   | 120psi(8.3bar)              | 120psi(8.3bar) |
|            | Temperature                | -40°C to 82°C               | 0°C to 71°C    |
|            | Tubing ID Sizes            | 1/16"(1.6mm) to 1/4"(6.4mm) |                |
|            | Thread Size                | 1/8-27NPT                   |                |
| Material   | Springs, thumb latch       | SUS316                      | SUS316         |
|            | O-rings                    | NBR                         | EPDM           |
|            | Main components and valves | POM-White                   | PP-Almond      |

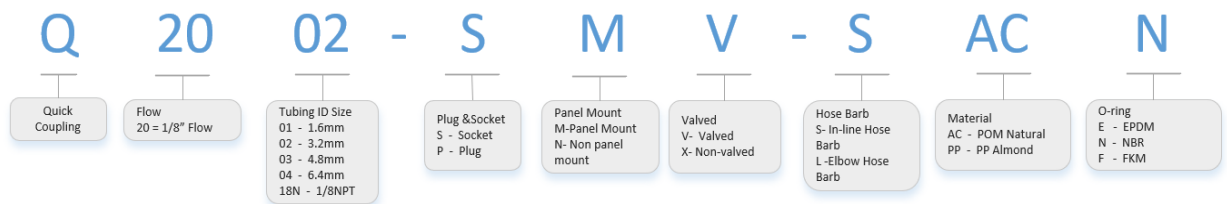
O-ring, Alternative FKM O-ring

## 1.2 Panel Dimensions

|                  |              |              |
|------------------|--------------|--------------|
| Panel Nut Thread | 1/2"-24UNS   | 1/2"-24UNS   |
| Panel Nut Hex    | 5/8"(16mm)   | 5/8"(16mm)   |
| Panel Mount Hole | 12.7 to 13mm | 12.7 to 13mm |



## 1.3 Interpretation



## 1.4 Ordering Information-POM

Valved Non-valved

## Q20 POM Material

| Non Panel Mount, Straightthrough Threaded Socket                                  |            |                 |                 |                |             |
|---|------------|-----------------|-----------------|----------------|-------------|
|  | Non-valved | Valved          | Thread Size     | Shell Material | O-ring      |
|   |            | Q2018N-SNX-SACN | Q2018N-SNV-SACN | 1/8" -27NPT    | POM-Natural |

| Non Panel Mount, Straightthrough In-line Hose Barb Socket                         |                |                |                |                |        |
|---|----------------|----------------|----------------|----------------|--------|
|  | Non-valved     | Valved         | Tubing ID Size | Shell Material | O-ring |
|   | Q2001-SNX-SACN | Q2001-SNV-SACN | 1/16" (1.6mm)  | POM-Natural    | NBR    |
|   | Q2002-SNX-SACN | Q2002-SNV-SACN | 1/8" (3.2mm)   | POM-Natural    | NBR    |
|   | Q2003-SNX-SACN | Q2003-SNV-SACN | 3/16" (4.8mm)  | POM-Natural    | NBR    |
|   | Q2004-SNX-SACN | Q2004-SNV-SACN | 1/4" (6.4mm)   | POM-Natural    | NBR    |

| Non Panel Mount, Elbow Hose Barb Socket   |                |                |                |                |        |
|---|----------------|----------------|----------------|----------------|--------|
|  | Non-valved     | Valved         | Tubing ID Size | Shell Material | O-ring |
|   | Q2002-SNX-LACN | Q2002-SNV-LACN | 1/8" (3.2mm)   | POM-Natural    | NBR    |
|   | Q2004-SNX-LACN | Q2004-SNV-LACN | 1/4" (6.4mm)   | POM-Natural    | NBR    |

| Panel Mount, Straightthrough In-line Hose Barb Socket                             |                |                |                |                |        |
|---|----------------|----------------|----------------|----------------|--------|
|  | Non-valved     | Valved         | Tubing ID Size | Shell Material | O-ring |
|   | Q2001-SMX-SACN | Q2001-SMV-SACN | 1/16" (1.6mm)  | POM-Natural    | NBR    |
|   | Q2002-SMX-SACN | Q2002-SMV-SACN | 1/8" (3.2mm)   | POM-Natural    | NBR    |
|   | Q2003-SMX-SACN | Q2003-SMV-SACN | 3/16" (4.8mm)  | POM-Natural    | NBR    |
|   | Q2004-SMX-SACN | Q2004-SMV-SACN | 1/4" (6.4mm)   | POM-Natural    | NBR    |

| Non Panel Mount, Straightthrough Threaded Plug                                    |            |                 |                 |                |             |
|---|------------|-----------------|-----------------|----------------|-------------|
|  | Non-valved | Valved          | Thread Size     | Shell Material | O-ring      |
|   |            | Q2018N-PNX-SACN | Q2018N-PNV-SACN | 1/8" -27NPT    | POM-Natural |

| Panel Mount, Straightthrough In-line Hose Barb Plug                                |                |                |                |                |        |
|--|----------------|----------------|----------------|----------------|--------|
|  | Non-valved     | Valved         | Tubing ID Size | Shell Material | O-ring |
|  | Q2001-PNX-SACN | Q2001-PNV-SACN | 1/16" (1.6mm)  | POM-Natural    | NBR    |
|  | Q2002-PNX-SACN | Q2002-PNV-SACN | 1/8" (3.2mm)   | POM-Natural    | NBR    |
|  | Q2003-PNX-SACN | Q2003-PNV-SACN | 3/16" (4.8mm)  | POM-Natural    | NBR    |
|  | Q2004-PNX-SACN | Q2004-PNV-SACN | 1/4" (6.4mm)   | POM-Natural    | NBR    |

| Non Panel Mount, Elbow Hose Barb Plug   |                |                |                |                |        |
|---|----------------|----------------|----------------|----------------|--------|
|  | Non-valved     | Valved         | Tubing ID Size | Shell Material | O-ring |
|   | Q2002-PNX-LACN | Q2002-PNV-LACN | 1/8" (3.2mm)   | POM-Natural    | NBR    |
|   | Q2004-PNX-LACN | Q2004-PNV-LACN | 1/4" (6.4mm)   | POM-Natural    | NBR    |

| Panel Mount, Straightthrough In-line Hose Barb Plug                                 |                |                |                |                |        |
|---|----------------|----------------|----------------|----------------|--------|
|  | Non-valved     | Valved         | Tubing ID Size | Shell Material | O-ring |
|   | Q2001-PMX-SACN | Q2001-PMV-SACN | 1/16" (1.6mm)  | POM-Natural    | NBR    |
|   | Q2002-PMX-SACN | Q2002-PMV-SACN | 1/8" (3.2mm)   | POM-Natural    | NBR    |
|   | Q2003-PMX-SACN | Q2003-PMV-SACN | 3/16" (4.8mm)  | POM-Natural    | NBR    |
|   | Q2004-PMX-SACN | Q2004-PMV-SACN | 1/4" (6.4mm)   | POM-Natural    | NBR    |

## 1.5 Ordering Information-PP

### Q20 PP Material

| Non Panel Mount, Straightthrough Threaded Socket                                  |                 |                 |             |                |        |
|---|-----------------|-----------------|-------------|----------------|--------|
|  | Non-valved      | Valved          | Thread Size | Shell Material | O-ring |
|   | Q2018N-SNX-SPPE | Q2018N-SNV-SPPE | 1/8"-27NPT  | PP-Almond      | EPDM   |

| Non Panel Mount, Straightthrough In-line Hose Barb Socket                         |                |                |                |                |        |
|---|----------------|----------------|----------------|----------------|--------|
|  | Non-valved     | Valved         | Tubing ID Size | Shell Material | O-ring |
|   | Q2001-SNX-SPPE | Q2001-SNV-SPPE | 1/16" (1.6mm)  | PP-Almond      | EPDM   |
|   | Q2002-SNX-SPPE | Q2002-SNV-SPPE | 1/8" (3.2mm)   | PP-Almond      | EPDM   |
|   | Q2003-SNX-SPPE | Q2003-SNV-SPPE | 3/16" (4.8mm)  | PP-Almond      | EPDM   |
|   | Q2004-SNX-SPPE | Q2004-SNV-SPPE | 1/4" (6.4mm)   | PP-Almond      | EPDM   |

| Non Panel Mount, Elbow Hose Barb Socket   |                |                |                |                |        |
|---|----------------|----------------|----------------|----------------|--------|
|  | Non-valved     | Valved         | Tubing ID Size | Shell Material | O-ring |
|   | Q2002-SNX-LPPE | Q2002-SNV-LPPE | 1/8" (3.2mm)   | PP-Almond      | EPDM   |
|   | Q2004-SNX-LPPE | Q2004-SNV-LPPE | 1/4" (6.4mm)   | PP-Almond      | EPDM   |

| Panel Mount, In-line Hose Barb Socket   |                |                |                |                |        |
|---|----------------|----------------|----------------|----------------|--------|
|  | Non-valved     | Valved         | Tubing ID Size | Shell Material | O-ring |
|   | Q2001-SMX-SPPE | Q2001-SMV-SPPE | 1/16" (1.6mm)  | PP-Almond      | EPDM   |
|   | Q2002-SMX-SPPE | Q2002-SMV-SPPE | 1/8" (3.2mm)   | PP-Almond      | EPDM   |
|   | Q2003-SMX-SPPE | Q2003-SMV-SPPE | 3/16" (4.8mm)  | PP-Almond      | EPDM   |
|   | Q2004-SMX-SPPE | Q2004-SMV-SPPE | 1/4" (6.4mm)   | PP-Almond      | EPDM   |

| Non Panel Mount, Straightthrough Threaded Plug                                    |                 |                 |             |                |        |
|---|-----------------|-----------------|-------------|----------------|--------|
|  | Non-valved      | Valved          | Thread Size | Shell Material | O-ring |
|   | Q2018N-PNX-SPPE | Q2018N-PNV-SPPE | 1/8"-27NPT  | PP-Almond      | EPDM   |

| Non Panel Mount, In-line Hose Barb Plug  |                |                |                |                |        |
|--|----------------|----------------|----------------|----------------|--------|
|  Non-valved<br> Valved | Non-valved     | Valved         | Tubing ID Size | Shell Material | O-ring |
|  | Q2001-PNX-SPPE | Q2001-PNV-SPPE | 1/16" (1.6mm)  | PP-Almond      | EPDM   |
|  | Q2002-PNX-SPPE | Q2002-PNV-SPPE | 1/8" (3.2mm)   | PP-Almond      | EPDM   |
|  | Q2003-PNX-SPPE | Q2003-PNV-SPPE | 3/16" (4.8mm)  | PP-Almond      | EPDM   |
|  | Q2004-PNX-SPPE | Q2004-PNV-SPPE | 1/4" (6.4mm)   | PP-Almond      | EPDM   |

| Non Panel Mount, Elbow Hose Barb Plug   |                |                |                |                |        |
|---|----------------|----------------|----------------|----------------|--------|
|  | Non-valved     | Valved         | Tubing ID Size | Shell Material | O-ring |
|   | Q2002-PNX-LPPE | Q2002-PNV-LPPE | 1/8" (3.2mm)   | PP-Almond      | EPDM   |
|   | Q2004-PNX-LPPE | Q2004-PNV-LPPE | 1/4" (6.4mm)   | PP-Almond      | EPDM   |

| Panel Mount, In-line Hose Barb Plug  |                |                |                |                |        |
|--|----------------|----------------|----------------|----------------|--------|
|  Non-valved<br> Valved | Non-valved     | Valved         | Tubing ID Size | Shell Material | O-ring |
|  | Q2001-PMX-SPPE | Q2001-PMV-SPPE | 1/16" (1.6mm)  | PP-Almond      | EPDM   |
|  | Q2002-PMX-SPPE | Q2002-PMV-SPPE | 1/8" (3.2mm)   | PP-Almond      | EPDM   |
|  | Q2003-PMX-SPPE | Q2003-PMV-SPPE | 3/16" (4.8mm)  | PP-Almond      | EPDM   |
|  | Q2004-PMX-SPPE | Q2004-PMV-SPPE | 1/4" (6.4mm)   | PP-Almond      | EPDM   |

# Q40 Series

Quick disconnect  
couplings, fittings and  
connectors



Mate with CPC-PLC series, LINK-40  
series couplings

Shenzhen Foreach Technology Co., Ltd.

Address: 1401-1, 1st Building, Baiwang R&D Building, 5158th ShaHe West Road, Nanshan District, Shenzhen, 518055 China

Tel: +86-755-8655-3831

www.foreachtek.com E-mail: info@foreachtek.com

## 2<sup>nd</sup> Q40 series quick disconnect couplings

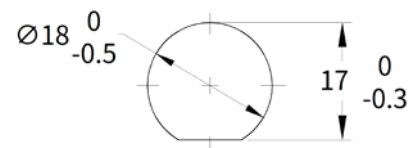
### 2.1 Data sheet

|                 |                            |                            |                |
|-----------------|----------------------------|----------------------------|----------------|
| Series          |                            | Q40-POM                    | Q40-PP         |
| CPC             |                            | PLC Series                 | PLC12 Series   |
| LINK            |                            | 40AC Series                | 40PP Series    |
| Spec sheet      | Pressure                   | 120psi(8.3bar)             | 120psi(8.3bar) |
|                 | Temperature                | -40°C to 82°C              | 0°C to 71°C    |
|                 | Tubing ID Sizes            | 1/4"(6.4mm) to 3/8"(9.5mm) |                |
|                 | Thread Size                | 1/4-18NPT, 3/8-18NPT       |                |
| Material        | Springs, thumb latch       | SUS316                     | SUS316         |
|                 | O-rings                    | NBR                        | EPDM           |
|                 | Main components and valves | POM-White                  | PP-Almond      |
| Panel Dimension | Panel Nut Thread           | 11/16"-24UNS               |                |
|                 | Panel Nut Hex              | 13/16"(20.7mm)             |                |
|                 | Panel Mount Hole           | 17.5 to 18mm               |                |

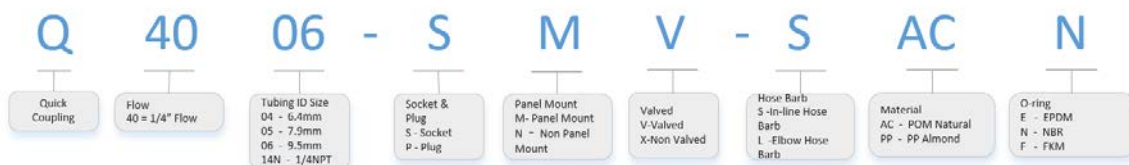
*O-ring, alternative FKM O-ring*

### 2.2 Panel Dimensions

|                 |                  |                |  |
|-----------------|------------------|----------------|--|
| Panel Dimension | Panel Nut Thread | 11/16"-24UNS   |  |
|                 | Panel Nut Hex    | 13/16"(20.7mm) |  |
|                 | Panel Mount Hole | 17.5 to 18mm   |  |



### 2.3 Model Interpretation



Valved Non-valved

## 2.4 Ordering Information-POM

### Q40 POM Material

| Non Panel Mount, Straightthrough Threaded Socket  |                 |                 |                |                |        |
|---|-----------------|-----------------|----------------|----------------|--------|
|                | Non-valved      | Valved          | Thread Size    | Shell Material | O-ring |
|   | Q4014N-SNX-SACN | Q4014N-SNV-SACN | 1/4"-18NPT     | POM- Natural   | NBR    |
|   |                 |                 |                |                |        |
| Non Panel Mount, In-line Hose Barb Socket   |                 |                 |                |                |        |
|                | Non-valved      | Valved          | Tubing ID Size | Shell Material | O-ring |
|   | Q4004-SNX-SACN  | Q4004-SNV-SACN  | 1/4" (6.4mm)   | POM- Natural   | NBR    |
|   | Q4005-SNX-SACN  | Q4005-SNV-SACN  | 5/16" (7.9mm)  | POM- Natural   | NBR    |
|   | Q4006-SNX-SACN  | Q4006-SNV-SACN  | 3/8" (9.5mm)   | POM- Natural   | NBR    |
| Panel Mount, In-line Hose Barb Socket   |                 |                 |                |                |        |
|                | Non-valved      | Valved          | Tubing ID Size | Shell Material | O-ring |
|   | Q4004-SMX-SACN  | Q4004-SMV-SACN  | 1/4" (6.4mm)   | POM- Natural   | NBR    |
|   | Q4005-SMX-SACN  | Q4005-SMV-SACN  | 5/16" (7.9mm)  | POM- Natural   | NBR    |
|   | Q4006-SMX-SACN  | Q4006-SMV-SACN  | 3/8" (9.5mm)   | POM- Natural   | NBR    |
| Non Panel Mount, Straightthrough Threaded Plug  |                 |                 |                |                |        |
|                | Non-valved      | Valved          | Thread Size    | Shell Material | O-ring |
|   | Q4014N-PNX-SACN | Q4014N-PNV-SACN | 1/4"-18NPT     | POM- Natural   | NBR    |
| Non Panel Mount, In-line Hose Barb Plug   |                 |                 |                |                |        |
| <br>Non-valved | Non-valved      | Valved          | Tubing ID Size | Shell Material | O-ring |
|   | Q4004-PNX-SACN  | Q4004-PNV-SACN  | 1/4" (6.4mm)   | POM- Natural   | NBR    |
|   | Q4005-PNX-SACN  | Q4005-PNV-SACN  | 5/16" (7.9mm)  | POM- Natural   | NBR    |
|   | Q4006-PNX-SACN  | Q4006-PNV-SACN  | 3/8" (9.5mm)   | POM- Natural   | NBR    |
| <br>Valved    |                 |                 |                |                |        |
|   |                 |                 |                |                |        |
| Non Panel Mount, Elbow Hose Barb Plug   |                 |                 |                |                |        |
|              | Non-valved      | Valved          | Tubing ID Size | Shell Material | O-ring |
|   | /               | Q4004-PNV-LACN  | 1/4" (6.4mm)   | POM- Natural   | NBR    |
|   | Q4006-PNX-LACN  | /               | 3/8" (9.5mm)   | POM- Natural   | NBR    |
| Panel Mount, In-line Hose Barb Plug   |                 |                 |                |                |        |
|              | Non-valved      | Valved          | Tubing ID Size | Shell Material | O-ring |
|   | Q4004-PMX-SACN  | Q4004-PMV-SACN  | 1/4" (6.4mm)   | POM- Natural   | NBR    |
|   | Q4005-PMX-SACN  | Q4005-PMV-SACN  | 5/16" (7.9mm)  | POM- Natural   | NBR    |
|   | Q4006-PMX-SACN  | Q4006-PMV-SACN  | 3/8" (9.5mm)   | POM- Natural   | NBR    |

## 2.5 Ordering Information-PP

### Q40 PP Material

|   |  | Non Panel Mount, Straightthrough Threaded Socket |                 |             |                |        |
|---|--|--|-----------------|-------------|----------------|--------|
|   |  | Non-valved                                       | Valved          | Thread Size | Shell Material | O-ring |
|  |  | Q4014N-SNX-SPPE                                  | Q4014N-SNV-SPPE | 1/4" -18NPT | PP-Almond      | EPDM   |

|   |  | Non Panel Mount, In-line Hose Barb Socket |                |                |                |        |
|---|--|---|----------------|----------------|----------------|--------|
|   |  | Non-valved                                | Valved         | Tubing ID Size | Shell Material | O-ring |
|  |  | Q4004-SNX-SPPE                            | Q4004-SNV-SPPE | 1/4" (6.4mm)   | PP-Almond      | EPDM   |
|   |  | Q4005-SNX-SPPE                            | Q4005-SNV-SPPE | 5/16" (7.9mm)  | PP-Almond      | EPDM   |
|   |  | Q4006-SNX-SPPE                            | Q4006-SNV-SPPE | 3/8" (9.5mm)   | PP-Almond      | EPDM   |

|   |  | Panel Mount, In-line Hose Barb Socket |                |                |                |        |
|---|--|---------------------------------------|----------------|----------------|----------------|--------|
|   |  | Non-valved                            | Valved         | Tubing ID Size | Shell Material | O-ring |
|  |  | Q4004-SMX-SPPE                        | Q4004-SMV-SPPE | 1/4" (6.4mm)   | PP-Almond      | EPDM   |
|   |  | Q4005-SMX-SPPE                        | Q4005-SMV-SPPE | 5/16" (7.9mm)  | PP-Almond      | EPDM   |
|   |  | Q4006-SMX-SPPE                        | Q4006-SMV-SPPE | 3/8" (9.5mm)   | PP-Almond      | EPDM   |

|   |  | Non Panel Mount, Straightthrough Threaded Socket |                 |             |                |        |
|---|--|--|-----------------|-------------|----------------|--------|
|   |  | Non-valved                                       | Valved          | Thread Size | Shell Material | O-ring |
|  |  | Q4014N-PNX-SPPE                                  | Q4014N-PNV-SPPE | 1/4" -18NPT | PP- Almond     | EPDM   |

|   |  | Non Panel Mount, In-line Hose Barb Plug |                |                |                |        |
|---|--|---|----------------|----------------|----------------|--------|
|   |  | Non-valved                              | Valved         | Tubing ID Size | Shell Material | O-ring |
|  |  | Q4004-PNX-SPPE                          | Q4004-PNV-SPPE | 1/4" (6.4mm)   | PP-Almond      | EPDM   |
|  |  | Q4005-PNX-SPPE                          | Q4005-PNV-SPPE | 5/16" (7.9mm)  | PP-Almond      | EPDM   |
|   |  | Q4006-PNX-SPPE                          | Q4006-PNV-SPPE | 3/8" (9.5mm)   | PP-Almond      | EPDM   |
|   |  | Q4004-PNX-SPPE                          | Q4004-PNV-SPPE | 1/4" (6.4mm)   | PP-Almond      | EPDM   |

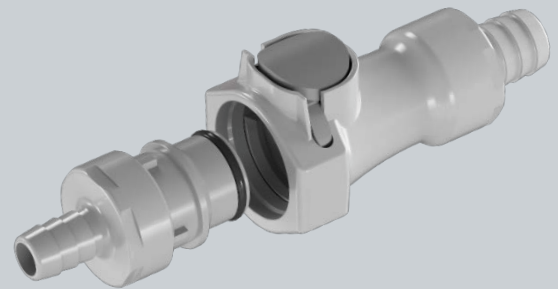
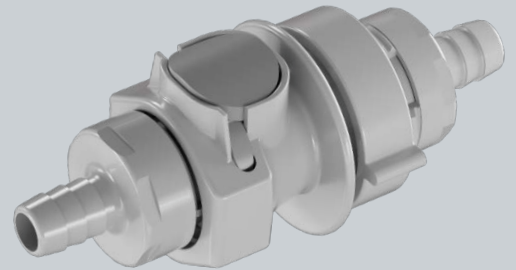
|   |  | Non Panel Mount, Elbow Hose Barb Plug |                |                |                |        |
|---|--|---------------------------------------|----------------|----------------|----------------|--------|
|   |  | Non-valved                            | Valved         | Tubing ID Size | Shell Material | O-ring |
|  |  | Q4006-PNX-LPPE                        | Q4004-PNV-LPPE | 1/4" (6.4mm)   | PP-Almond      | EPDM   |
|   |  |                                       | /              | 3/8" (9.5mm)   | PP-Almond      | EPDM   |

|   |  | Panel Mount, In-line Hose Barb Plug |                |                |                |        |
|---|--|-------------------------------------|----------------|----------------|----------------|--------|
|   |  | Non-valved                          | Valved         | Tubing ID Size | Shell Material | O-ring |
|  |  | Q4004-PMX-SPPE                      | Q4004-PMV-SPPE | 1/4" (6.4mm)   | PP-Almond      | EPDM   |
|   |  | Q4005-PMX-SPPE                      | Q4005-PMV-SPPE | 5/16" (7.9mm)  | PP-Almond      | EPDM   |
|   |  | Q4006-PMX-SPPE                      | Q4006-PMV-SPPE | 3/8" (9.5mm)   | PP-Almond      | EPDM   |

# Q60 Series

Quick disconnect  
couplings, fittings and  
connectors



Mate with CPC-PLC series, LINK-40  
series couplings

Shenzhen Foreach Technology Co., Ltd.

Address: 1401-1, 1st Building, Baiwang R&D Building, 5158th ShaHe West Road, Nanshan District, Shenzhen, 518055  
China

Tel: +86-755-8655-3831

www.foreachtek.com E-mail: info@foreachtek.com

### 3<sup>rd</sup>. Q60 series quick disconnect couplings

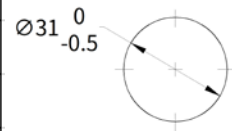
#### 3.1 Datasheet

|                 |                            |                           |
|-----------------|----------------------------|---------------------------|
| Series          |                            | Q60-PP                    |
| CPC             |                            | HFC12 Series              |
| LINK            |                            | 60PP Series               |
| Spec sheet      | Pressure                   | 60psi (4.2bar)            |
|                 | Temperature                | 0°C to 71°C               |
|                 | Tubing ID Sizes            | 3/8"(9.5mm) to 3/4"(19mm) |
|                 | Thread Size                | 3/8-18NPT, 1/2-14NPT      |
| Material        | Springs, thumb latch       | SUS316                    |
|                 | O-rings                    | EPDM                      |
|                 | Main components and valves | PP Grey                   |
| Panel Dimension | Panel Nut Thread           | M30*3.5                   |
|                 | Panel Nut Hex              | 1.375"(35mm)              |
|                 | Panel Mount Hole           | 30.5 to 31mm              |

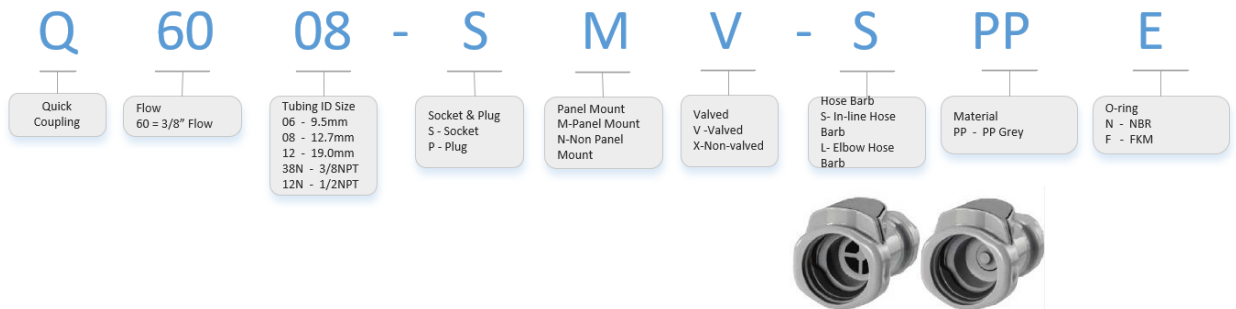
*O-ring, Alternative FKM O-ring*

#### 3.1 Panel Dimension

|                 |                  |              |
|-----------------|------------------|--------------|
| Panel Dimension | Panel Nut Thread | M30*3.5      |
|                 | Panel Nut Hex    | 1.375"(35mm) |
|                 | Panel Mount Hole | 30.5 to 31mm |










#### 3.2 Model Interpretation



#### 3.3 Ordering Information-PP

Non-valved Valved

## Q60 PP Material

| Non Panel Mount, Straightthrough Threaded Socket                                    |                 |                 |                |                |        |
|---|-----------------|-----------------|----------------|----------------|--------|
|    | Non-valved      | Valved          | Thread Size    | Shell Material | O-ring |
|   | Q6038N-SNX-SPPE | Q6038N-SNV-SPPE | 3/8"-18NPT     | PP-Grey        | EPDM   |
|   | Q6012N-SNX-SPPE | Q6012N-SNV-SPPE | 1/2"-14NPT     | PP-Grey        | EPDM   |
| Non Panel Mount, In-line Hose Barb Socket   |                 |                 |                |                |        |
|    | Non-valved      | Valved          | Tubing ID Size | Shell Material | O-ring |
|   | Q6006-SNX-SPPE  | Q6006-SNV-SPPE  | 3/8" (9.5mm)   | PP-Grey        | EPDM   |
|   | Q6008-SNX-SPPE  | Q6008-SNV-SPPE  | 1/2" (12.7mm)  | PP-Grey        | EPDM   |
|   | Q6012-SNX-SPPE  | Q6012-SNV-SPPE  | 3/4" (19.0mm)  | PP-Grey        | EPDM   |
| Panel Mount, In-line Hose Barb Socket   |                 |                 |                |                |        |
|    | Non-valved      | Valved          | Tubing ID Size | Shell Material | O-ring |
|   | Q6006-SMX-SPPE  | Q6006-SMV-SPPE  | 3/8" (9.5mm)   | PP-Grey        | EPDM   |
|   | Q6008-SMX-SPPE  | Q6008-SMV-SPPE  | 1/2" (12.7mm)  | PP-Grey        | EPDM   |
|   | Q6012-SMX-SPPE  | Q6012-SMV-SPPE  | 3/4" (19.0mm)  | PP-Grey        | EPDM   |
| Panel Mount, Elbow Hose Barb Socket   |                 |                 |                |                |        |
|    | Non-valved      | Valved          | Threaded Size  | Shell Material | O-ring |
|   | Q6006-SMX-LPPE  | Q6006-SMV-LPPE  | 3/8" (9.5mm)   | PP-Grey        | EPDM   |
|   | Q6008-SMX-LPPE  | Q6008-SMV-LPPE  | 1/2" (12.7mm)  | PP-Grey        | EPDM   |
| Non Panel Mount, Straightthrough Threaded Plug                                      |                 |                 |                |                |        |
|    | Non-valved      | Valved          | Threaded Size  | Shell Material | O-ring |
|   | Q6038N-PNX-SPPE | Q6038N-PNV-SPPE | 3/8"-18NPT     | PP-Grey        | EPDM   |
|   | Q6012N-PNX-SPPE | Q6012N-PNV-SPPE | 1/2"-14NPT     | PP-Grey        | EPDM   |
| Non Panel Mount, In-line Hose Barb Plug   |                 |                 |                |                |        |
|   | Non-valved      | Valved          | Tubing ID Size | Shell Material | O-ring |
|   | Q6006-PNX-SPPE  | Q6006-PNV-SPPE  | 3/8" (9.5mm)   | PP-Grey        | EPDM   |
|   | Q6008-PNX-SPPE  | Q6008-PNV-SPPE  | 1/2" (12.7mm)  | PP-Grey        | EPDM   |
|   | Q6012-PNX-SPPE  | Q6012-PNV-SPPE  | 3/4" (19.0mm)  | PP-Grey        | EPDM   |
| Non Panel Mount Elbow Hose Barb Plug  |                 |                 |                |                |        |
|  | Non-valved      | Valved          | Threaded Size  | Shell Material | O-ring |
|   | Q6006-PNX-LPPE  | Q6006-PNV-LPPE  | 3/8" (9.5mm)   | PP-Grey        | EPDM   |
|   | Q6008-PNX-LPPE  | Q6008-PNV-LPPE  | 1/2" (12.7mm)  | PP-Grey        | EPDM   |

Thank you for choosing our products, we will always provide the best service.



Shenzhen Foreach Technology Co., Ltd.

Address: 1401-1, 1st Building, Baiwang R&D Building, 5158th ShaHe West Road, Nanshan District, Shenzhen, 518055  
China

Tel: +86-755-8655-3831

www.foreachtek.com E-mail: info@foreachtek.com

